

Sharp's Cemetery Board of Directors Meeting – 5/13/19

Attendees: Tom Swan, Charles Moore, Jerry Hendricks, Pam Goffinet, Franklin Mackie, Bill Ayers and Vince Dougherty.

- **Tree replacement.** Franklin and Jerry met with Bill Bathon of Bay Country Landscape Co. on April 10 and discussed several possibilities. A proposal was received (attached) to address plantings along the fence as well as a protective barrier at the driveway corners. Plant size and the number of plants are yet to be determined. An email discussion could not reach a consensus though it was agreed that we needed an optional proposal. Franklin and Jerry then had an appointment with Heartwood Landscaping & Tree Service on May 1 but they thought it was for a different date, so Jerry was able to meet with Jon Auer the following day. Jerry informed them the outlines of the previous proposal but alternatives were recommended. He thought the ground was too compact along the driveway for successful plantings and suggested a fence for protection but would provide a proposal for consideration. He also suggestion small shrubs out front with midsize trees inside to create an alee for an entrance. He will send out one of their designers to draw up a plan.
- **Gravesite excavation.** In light of the price list received from Elkton Cemetery and Cooper Wilbert Vault (attached), and that we currently let the funeral homes charge for excavations, the Board voted to change our procedure and we will now directly charge \$900 and cut out the middleman. Tom will inform the funeral homes of the new policy.
- **Finances.** Pam paid \$825 to Eric for two mowings and he agreed to return to finish cutting down the tree stump. A new account has yet to be created with Fidelity so Pam deposited the \$1350 check received from Brian McCandless into our existing account.

- **Corner stones.** The three sets of M stones needed have not been ordered yet nor a set of Fs. We will wait until they arrive to install those as well as the ones we received several months ago.
- **Cleanup.** We have received no complaints recently about removed items, but North East Cemetery made the news with multiple complaints after a long overdue cleanup. One of the suggestions from their owners was to communicate with members through social media. Amy suggested we create a private group facebook page but after a discussion there was no consensus with concerns expressed about what to post and that it would probably reach very few lot owners. The idea has been put on hold for now.
- **Database.** Jerry is making a priority the public portion of the database and has uploaded about ¼ of the over 900 photos of headstones taken along with their location and transcription. Once complete, the information that will not be made public, including contact information, deeds and sales info will follow. Pam mentioned that she has several more suggestions for formatting the database.
- **Damaged headstone.** Jerry spoke with Ted at Abba Monuments and he has epoxied the largest pieces back together but needs to fill the gaps with cement. It should be ready in a few weeks and will cost \$100.
- **Bylaws.** No one has found a copy yet but the search will continue. If we still come up short, we can use the existing draft copy as a basis to approve an official set of bylaws.

Submitted by Jerry Hendricks

Next meeting on June 10, 2019



April 17, 2019

Sharp's Cemetery
 226 Lewisville Road
 Fair Hill, Maryland 21921

RFP: Landscape renovation to Cemetery

PROPOSAL:

Bay Country will provide design and landscape installation of trees and shrubs located at Sharp's Cemetery at Fair Hill, MD. The plant installation will be the following:

QTY	PLANT	SIZE	COST	TOTAL
6	White Dogwood	5/6	\$270.00	\$1620.00
Or 6	White Dogwood	6/8'	\$335.00	\$2010.00
2	Sugar Maple	2/2.5"	\$335.00	\$ 670.00
Or 2	Sugar Maple	2.5/3"	\$440.00	\$ 880.00
6	Nellie Stevens Holly	4/5'	\$195.00	\$1170.00
Or 6	Nellie Stevens Holly	6/7'	\$280.00	\$1680.00
18	American Yew	24/30"	\$ 55.00	\$ 990.00

 Sharp's Cemetery

 Bay Country Landscape Co.

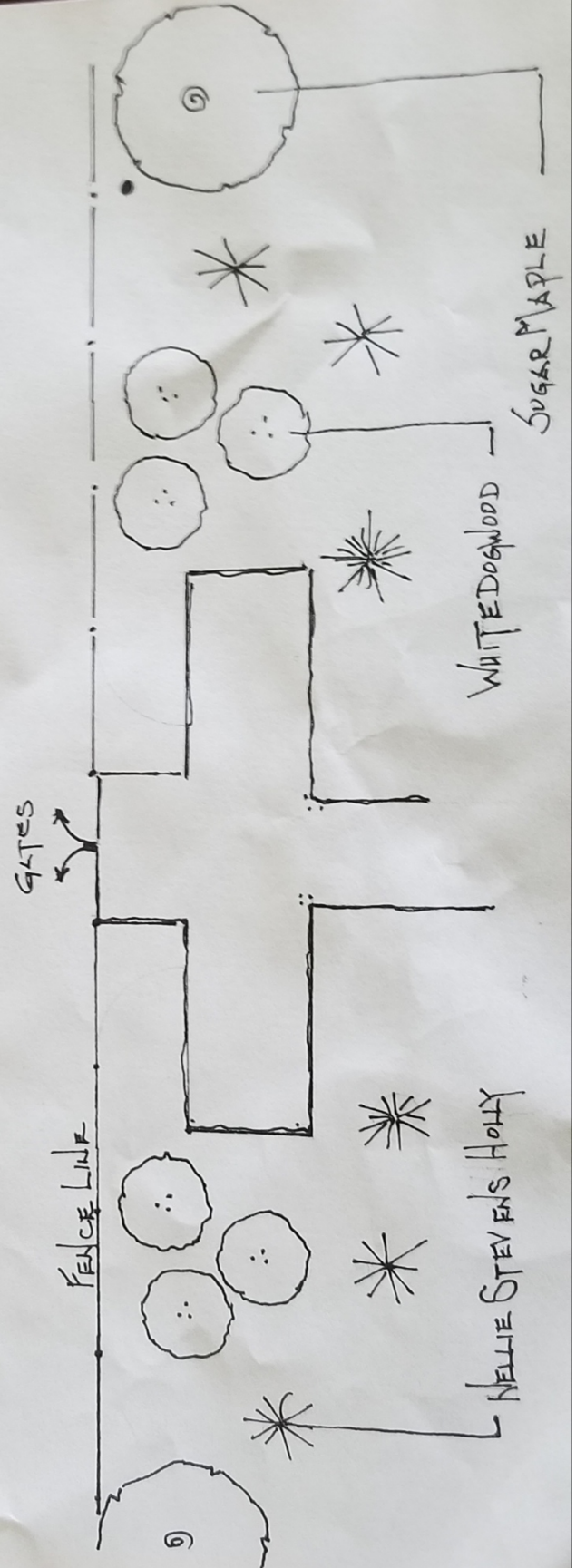
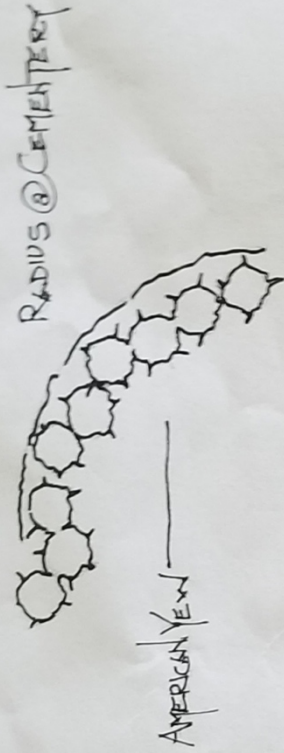
 Date

 Date

P.O. Box 671 • Elkton, MD 21922

227 S. Bridge Street • Elkton, MD 21921 • 410.398.0880 • FAX 410.398.4433
www.baycountrylandscape.com

SHARP'S
CEMENTERY
FAIR HILL, MD



ELKTON CEMETERY, Inc.
100 Lincoln Avenue
Elkton, MD 21921
410-398-6829

April 18, 2014

Dear Funeral Director,

Effective May 1, 2014 there will be an increase in prices. **Cooper Wilbert Vault Company of Delaware** will be our primary provider.

\$1100.00 single new grave with corner markers
\$950.00 single grave opening and closing
\$1500.00 double depth grave opening and closing
\$350.00 baby grave – Requires a Combination Unit
\$350.00 Cremation Grave
\$350.00 baby or cremains grave opening and closing

If graves are dug by Cooper and burial vaults and services are provided by others, the additional charge will be \$200.00 Monday through Saturday; infant and cremains an additional \$50.00. If the service is on Sunday, the fee is an additional \$250.00; on Saturday an additional \$125.00. These charges are billed to the cemetery.

Kindly make payments within 72 hours of the service. Graves must be paid for at time of purchase.

All foundation and stone work **must** contact the cemetery prior to installation in order for us to update our records.

Please contact Deborah S. Storke at the above number if you have any questions.

Sincerely,



Deborah S. Storke
Treasurer/Secretary



**Cemetery Grave Digging Fees
2014**

Cooper Wilbert Vault Co.

COOPERWILBERTVAULT

Opening and Closing of Grave*	\$ 450.00
Opening and Closing of Grave Double Depth*	\$ 550.00
Greens & Device	\$ 65.00
Tent	\$ 65.00
Saturday Charge	
Before 1pm	\$ 50.00
After 1pm	\$ 125.00
Sunday and Holiday Charge	\$ 250.00
Monument Removal	\$ 90.00
Foundation Installation	.50 sq. in. \$ 150.00 minimum charge
Ledger Removal, reinstallation, and foundation	\$ 700.00
Opening and Closing of Cremation Graves	\$ 265.00
Opening and Closing of Dble. Cremation Graves	\$ 300.00
Opening and Closing of Infant Graves	\$ 200.00
Opening and Closing of Private Mausoleums	\$ 400.00
Hand Dug Graves	\$ 800.00

*If Cooper Wilbert Vault Co., does not have the vault, there will be a \$200.00 backfill fee.

**Ph: 888-547-8405
Fax: 866-547-5454**